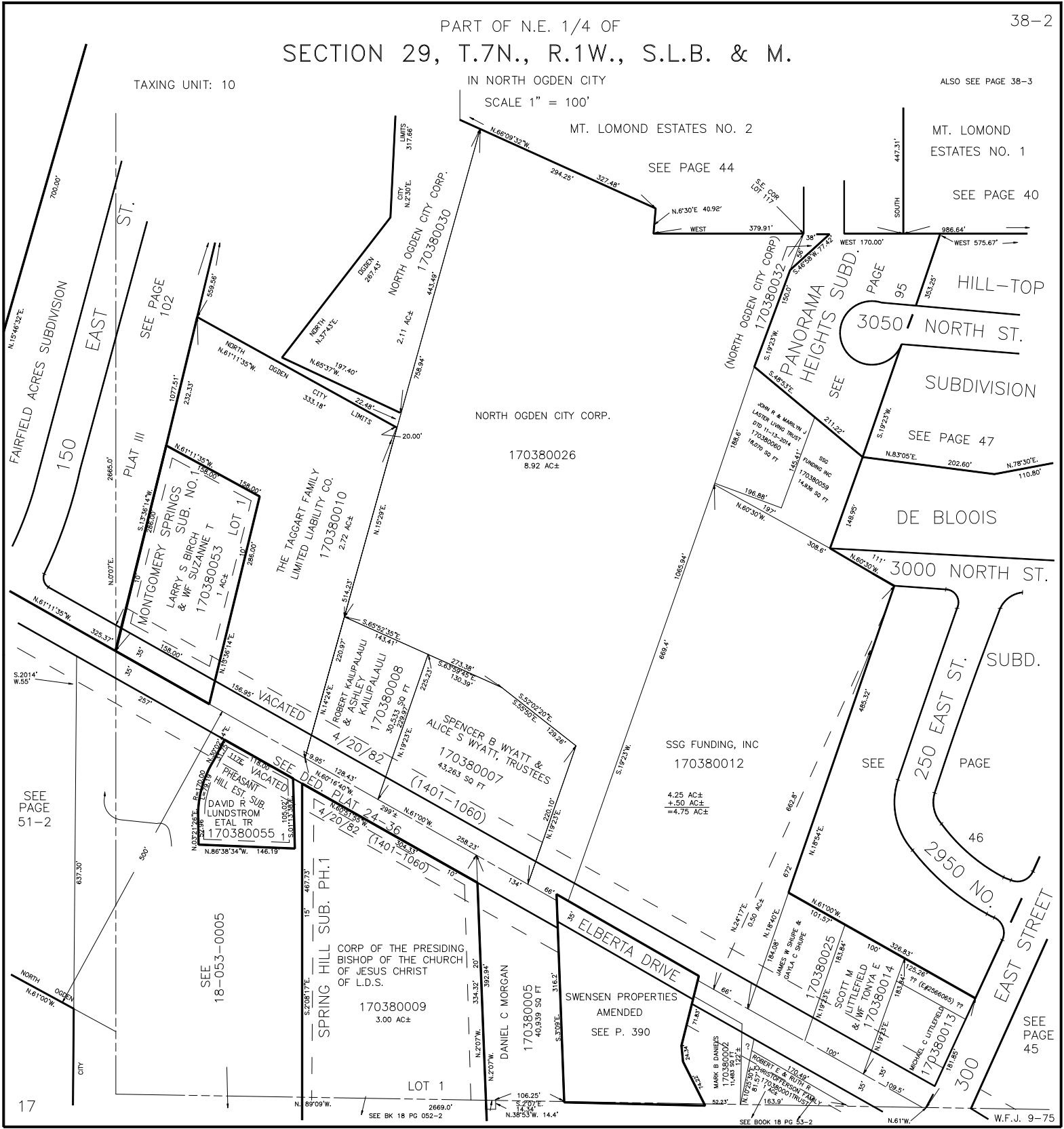


PART OF N.E. 1/4 OF SECTION 29, T.7N., R.1W., S.L.B. & M.

TAXING UNIT: 10

IN NORTH OGDEN CITY
SCALE 1" = 100'

ALSO SEE PAGE 38-3



MT. LOMOND ESTATES NO. 2

MT. LOMOND ESTATES NO. 1

SEE PAGE 44

SEE PAGE 40

HILL-TOP

SUBDIVISION

SEE PAGE 47

DE BLOIS

3000 NORTH ST.

SUBD.

250 EAST ST.

SEE PAGE

46

2950 NO. EAST STREET

SEE PAGE 45

W.F.J. 9-75